

Monthly Weather Summary in Thailand

February 2015

The weather condition was periodically dominated by the high pressure area from China which extended its ridge to cover upper Thailand almost the month. In addition, the prevailing of the northeast monsoon over the southern Thailand and the Gulf of Thailand during early month after that it altered to the southeasterly wind over upper Thailand with the passage of the westerly trough over upper Thailand for few days. These caused morning cool weather over Thailand, particularly in the upper northern part where experienced cold weather nearly the whole month and in the northeastern part during the first half of the month. Cold weather was also present some rest areas of central and eastern parts. However, during late month, temperature was relatively increased during daytime and successive hot weather was pronounced. Mean temperature of February was slightly below normal of 0.2 °C. For rainfall, upper Thailand received unseasonably rainfall during mid-month especially in the northeastern and eastern parts while southern Thailand obtained less rainfall. Monthly rainfall was below normal in most parts of the country i.e. northern part 5.4 mm (52%), eastern part 7.5 mm (26%), southern part (east coast) 29.9 mm (87%) and southern part (west coast) 1.5 mm (5%) while it was inversely above normal in northeastern part 14.7 mm (79%) and central part 0.5 mm (4%).

1 – 10 February: The ridge of the rather active high pressure areas from China extending to cover upper Thailand coupled with the prevailing of the northeast monsoon over the southern Thailand and the Gulf of Thailand caused generally cool weather in Thailand especially in the northern and northeastern parts where experienced cold weather in many areas and also in some areas of the central and eastern parts. The minimum temperature of the period was 11.5 °C at Umphang in Tak province on February 5 while that of the mountaintop was 4.5 °C at Doi Inthanon, Chom Thong in Chiang Mai province on February 2. For rainfall, there was no measurable rainfall in upper Thailand while southern Thailand obtained isolated light to moderate rain during the first half of the period. The maximum daily rainfall of 32.5 mm was measured at Sichon in Nakhon Si Thammarat province on February 5.

11 – 20 February: The combination of the weak high pressure areas, the passage of the westerly trough to upper Thailand during mid-period and the prevailing of the easterly wind over upper Thailand led to cool weather in Thailand especially during mid-period that temperature was generally decreased and cold weather was observed in many places of the northern and some areas of the northeastern. The lowest minimum temperature was 7.0 °C at Umphang in Tak province on February 15 and dropped to 3.0 °C in the area of mountaintop at Doi Ang Khang, Fang in Chiang Mai province on February 18. Hail was reported at Doi Inthanon, Chom Thong in Chiang Mai province on February 17 and also at Doi Ang Khang, Fang in Chiang Mai province on February 17 and 18. For rainfall, with the passage of the westerly trough and the extending of another ridge of the high pressure areas, unseasonably rainfall was found in upper Thailand especially in the northeastern and eastern parts. The highest daily rainfall of 100.5 mm was recorded at Si Songkhram in Nakhon Phanom province on February 16. Gusty wind occurred at Kamphaeng Phet province on February 17 and at Kalasin province on February 16 and at Khon Kaen province on February 17 and 18. In southern Thailand, isolated rain with heavy rainfall in some areas during late period. The highest daily rainfall was 87.0 mm at Ko Lanta in Krabi on February 18.

21 – 28 February: Cool weather continued in Thailand with cold weather in the upper northern part. The lowest minimum temperature was 11.0 °C at Mae Sariang in Mae Hong Son province on February 25 while that of the mountaintop was 3.9 °C at Doi Ang Khang, Fang in Chiang Mai province on February 21. Meanwhile, daytime temperature rose from the mid-period and the consecutive days of hot weather was pronounced. The highest maximum temperature was 39.1 °C at Amphoe Mueang in Phetchabun province on February 28. For rainfall, there was unexpected rainfall in the northeastern and central parts with the maximum daily rainfall of 63.1 mm at Kao Liao in Nakhon Sawan province on February 22. Thundershower occurred at Phichit, Phitsanulok and Nong Khai provinces on February 22 and at Kalasin and Nakhon Phanom provinces on February 23 and at Yasothon province on February 26. Thundershower with hail occurred at Loei province on February 21, Si Sa Ket province on February 25 and at Phra Nakhon Si Ayutthaya province on February 28. In southern Thailand, isolated light to moderate rain was found during early period with the highest daily rainfall of 4.0 mm at Bo Yang in Songkhla province on February 22.

Note : Rainfall, temperatures and natural disasters in this report was updated up to March 3, 2015.

Climatological Center
Meteorological Development Bureau
Meteorological Department

Monthly Report
Rainfall and Accumulative Rainfall
February 2015

Northern Thailand

Station	Temperature (°c)		Rainfall (mm)		Accumulative rainfall (mm) Since 1 January	
	Mean	Above or below normal	Actual	Above or below normal	Actual	Above or below normal
Chiang Rai	21.7	0.1	0.0	-13.8	58.5	37.2
Mae Hong Son	22.2	-0.4	0.0	-6.0	9.2	-3.2
Phayao	22.5	-0.3	0.0	-9.2	77.2	62.3
Chiang Mai	24.3	0.4	0.0	-8.9	78.9	65.8
Tha Wang Pha	22.8	0.3	0.9	-8.1	66.4	50.4
Nan	24.0	0.4	7.1	-4.8	62.4	46.1
Lamphun	24.3	0.0	0.0	-4.9	62.2	54.5
Lampang	24.5	-0.2	0.0	-8.8	79.5	67.9
Mae Sariang	21.7	-0.5	0.0	-6.5	28.4	20.4
Phrae	24.4	-0.2	19.7	10.9	72.8	58.2
Uttaradit	26.3	0.2	0.0	-14.5	43.2	23.2
Bhumibol Dam	25.9	-0.8	0.0	-6.9	66.5	57.0
Tak	26.3	-1.0	0.0	-8.7	55.8	45.0
Mae Sot	24.5	0.0	0.0	-8.2	66.6	56.7
Umphang	22.2	0.6	0.0	-9.1	27.2	11.3
Phitsanulok	26.5	-0.5	20.8	7.3	35.6	18.2
Lom Sak	25.6	-0.3	23.7	6.6	28.8	6.9
Phetchabun	26.1	-0.4	12.9	-3.2	13.6	-8.1
Wichian Buri	26.7	-0.8	12.7	0.1	12.7	-7.6
Kamphaeng Phet	26.4	-0.4	2.7	-10.4	42.8	27.4
Over the area	24.4	-0.2	5.0	-5.4 -52%	49.4	34.4 229%

Northeastern Thailand

Station	Temperature (°c)		Rainfall (mm)		Accumulative rainfall (mm) Since 1 January	
	Mean	Above or below normal	Actual	Above or below normal	Actual	Above or below normal
Nong Khai	25.0	0.1	49.9	32.6	65.3	39.7
Loei	23.7	-0.5	44.6	28.5	56.6	34.3
Udon Thani	24.9	-0.4	47.6	25.6	50.0	21.7
Nakhon Phanom	24.6	0.2	13.9	-17.1	19.9	-14.1
Sakon Nakhon	24.3	-0.1	91.8	62.5	95.0	61.0
Mukdahan	25.0	0.1	31.1	13.7	31.1	10.0
Khon Kaen	25.2	-0.7	42.4	21.0	42.4	17.0
Kosum Phisai	25.9	0.1	30.7	15.7	30.7	12.2
Roi Et	25.9	0.2	42.1	22.9	42.1	19.3
Chaiyaphum	26.5	-0.2	25.5	11.2	25.5	6.7
Ubon Ratchathani	26.1	-0.4	42.1	26.7	42.1	24.7
Tha Tum	26.0	-0.2	9.5	-6.6	9.5	-11.7
Surin	26.2	-0.4	21.4	9.9	21.5	4.4
Nakhon Ratchasima	26.4	-0.5	17.2	1.1	18.1	-6.2
Chok Chai	26.0	-0.5	11.0	-3.8	38.6	19.8
Nang Rong	25.6	-0.8	10.6	-9.0	13.5	-10.8
Over the area	25.5	-0.2	33.2	14.7 79%	37.6	14.3 61%

- NOTES :
- 1) Mean temperature is the average of daily dry-bulb temperature
 - 2) "T" is trace, rainfall amount less than 0.1 mm.
 - 3) "blank" is incomplete data.
 - 4) Temperature and rainfall are preliminary data.

Monthly Current Report
Rainfall and Accumulative Rainfall
February 2015

Central Thailand

Station	Temperature (°c)		Rainfall (mm)		Accumulative rainfall (mm) Since 1 January	
	Mean	Above or below normal	Actual	Above or below normal	Actual	Above or below normal
Nakhon Sawan	27.9	-0.2	6.1	-5.8	13.4	-2.8
Bua Chum	27.0	-0.4	10.4	1.3	10.8	-5.0
Lop Buri	28.1	0.0	11.2	4.3	17.4	4.8
Suphan Buri	27.7	0.3	0.0	-6.9	11.5	0.9
Thong Pha Phum	26.1	-0.7	0.0	-16.4	32.0	10.2
Kanchanaburi	27.8	-0.2	57.8	39.6	83.5	62.0
Bangkok Airport	27.9	-0.4	0.2	-8.8	2.9	-17.5
Bangkok Metropolis	28.3	0.0	16.8	-3.2	20.3	-13.0
Over the area	27.6	-0.2	12.8	0.5 4%	24.0	5.0 26%

Eastern Thailand

Station	Temperature (°c)		Rainfall (mm)		Accumulative rainfall (mm) Since 1 January	
	Mean	Above or below normal	Actual	Above or below normal	Actual	Above or below normal
Prachin Buri	27.8	-0.4	26.2	10.4	32.2	8.7
Kabin Buri	26.3	-1.5	31.2	6.3	36.0	2.1
Aranyaprathet	27.6	-0.6	21.8	-5.8	21.8	-11.2
Chon Buri	28.2	0.2	13.6	-0.7	13.6	-10.6
Ko Sichang	27.4	-0.2	19.2	3.5	25.4	-1.2
Pattaya	27.2	-0.1	0.0	-14.3	9.4	-20.5
Sattahip	26.7	-0.8	10.1	-9.3	13.9	-31.1
Rayong	26.9	-1.0	38.8	2.3	40.2	-17.0
Chanthaburi	26.9	-0.4	46.6	10.2	58.9	3.8
Khlong Yai	26.9	-0.3	8.4	-77.6	24.6	-98.6
Over the area	27.2	-0.5	21.6	-7.5 -26%	27.6	-17.6 -39%

- NOTES :
- 1) Mean temperature is the average of daily dry-bulb temperature
 - 2) "T" is trace, rainfall amount less than 0.1 mm.
 - 3) "blank" is incomplete data.
 - 4) Temperature and rainfall are preliminary data.

Monthly Current Report
Rainfall and Accumulative Rainfall
February 2015

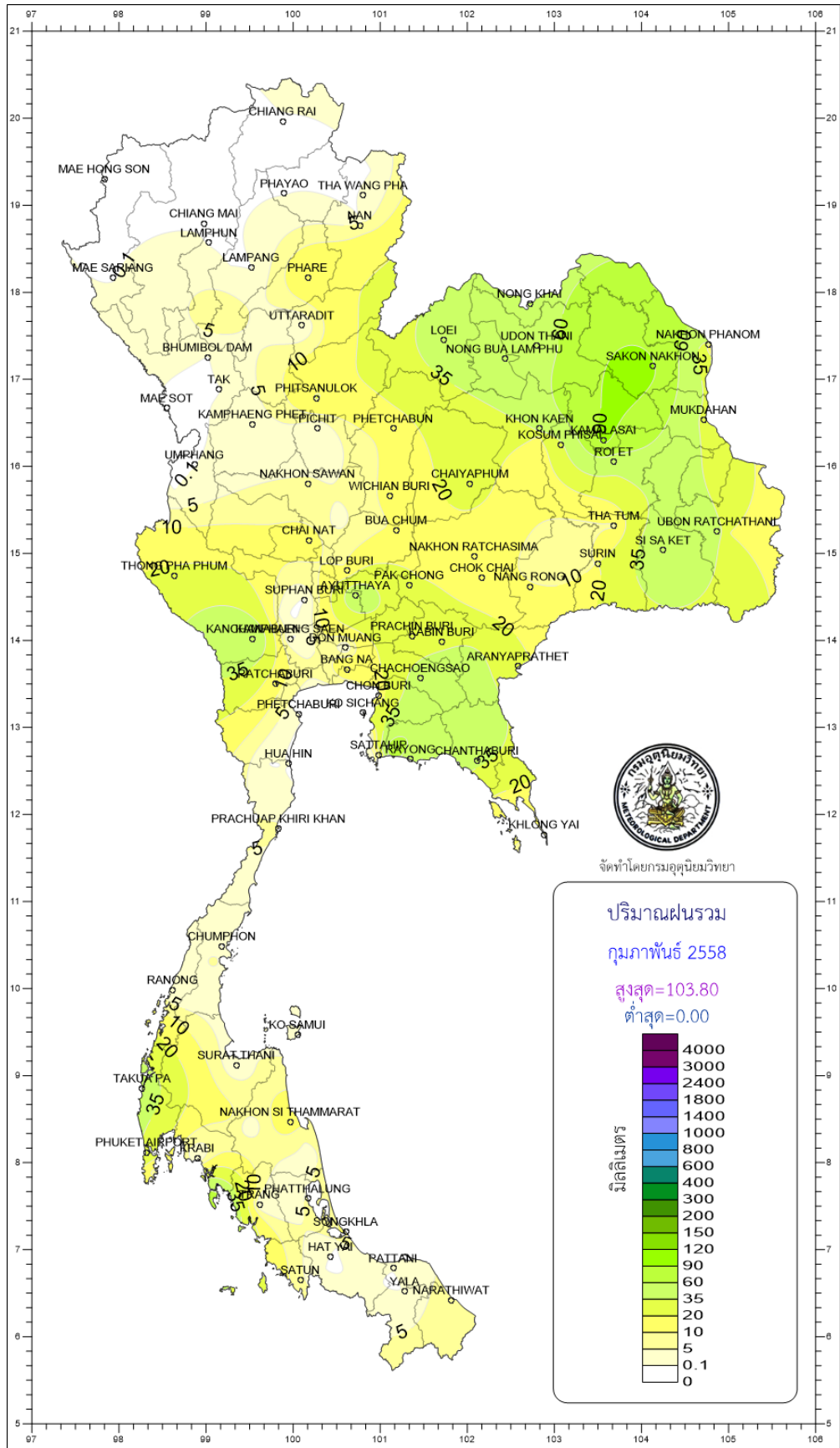
Southern Thailand, east coast

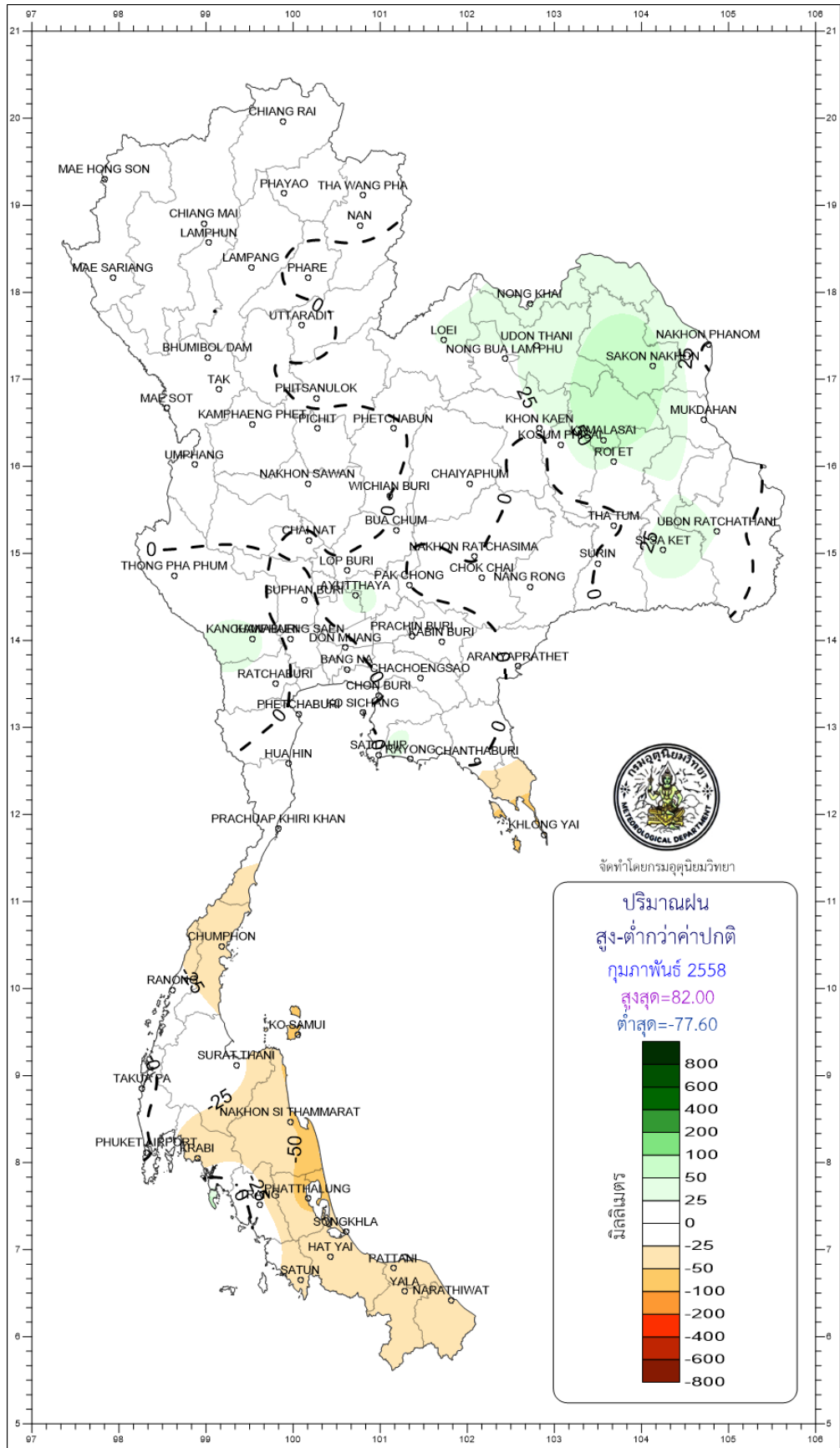
Station	Temperature (°c)		Rainfall (mm)		Accumulative rainfall (mm) Since 1 January	
	Mean	Above or below normal	Actual	Above or below normal	Actual	Above or below normal
Phetchaburi	27.2	0.0	1.1	-2.8	18.4	3.1
Hua Hin	27.0	-0.2	0.2	-15.1	25.4	-1.7
Prachuap Khiri Khan	26.5	-0.1	5.7	-16.1	17.1	-29.1
Chumphon	26.6	-0.1	0.0	-44.7	104.2	0.1
Surat Thani	26.0	-0.4	0.9	-11.4	29.0	-20.1
Ko Samui	27.2	-0.2	2.0	-52.4	80.1	-60.5
Nakhon Si Thammarat	25.8	-0.7	18.3	-49.9	87.8	-125.8
Songkhla	27.1	-0.4	13.0	-35.6	56.2	-67.2
Hat Yai Airport	26.4	-0.3	0.0	-24.4	6.6	-71.6
Pattani Airport	26.2	-0.3	0.2	-31.8	10.4	-72.5
Narathiwat	26.3	-0.3	9.3	-44.4	102.7	-52.6
Over the area	26.6	-0.2	4.6	-29.9 -87%	48.9	-45.3 -48%

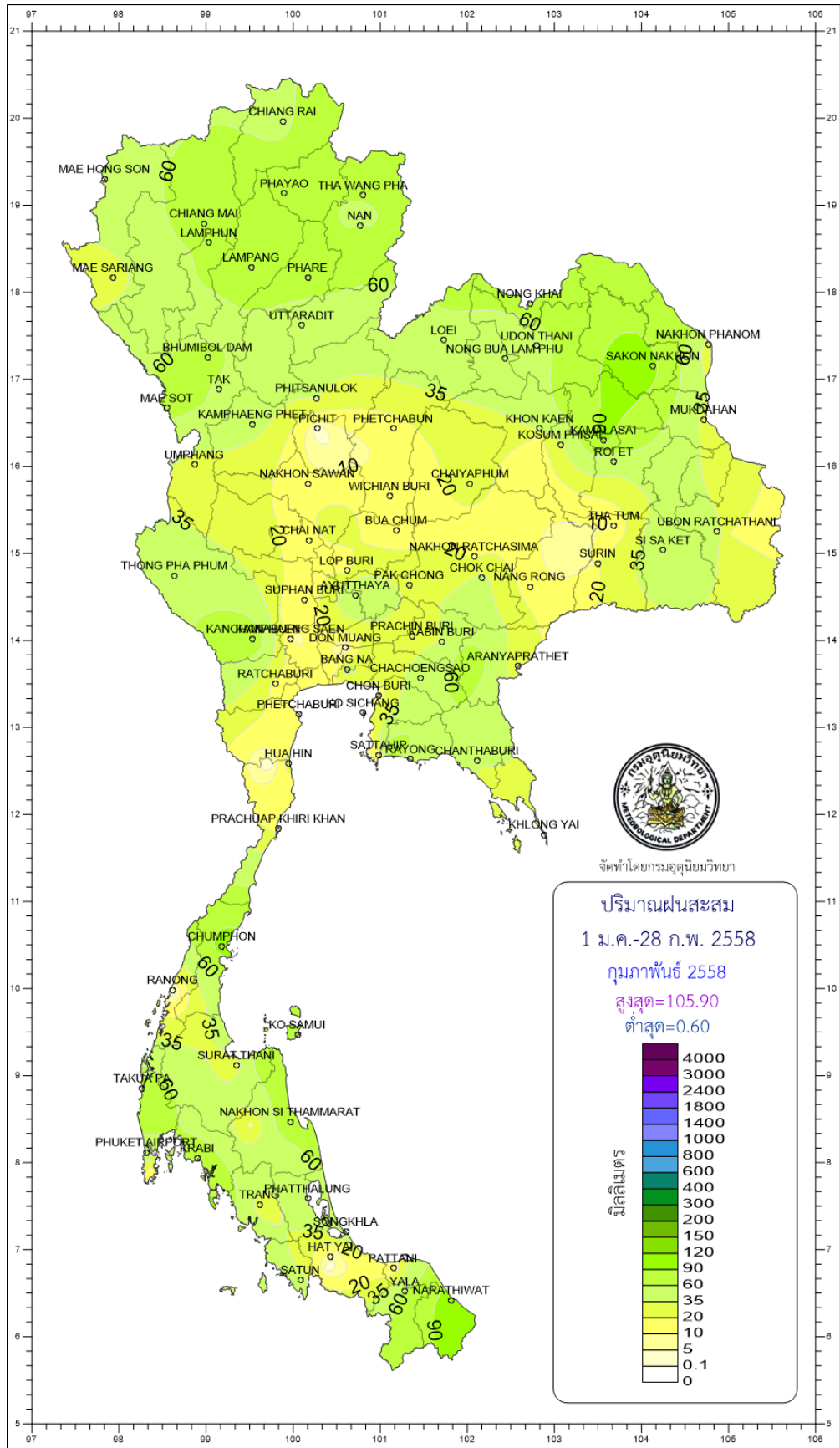
Southern Thailand, west coast

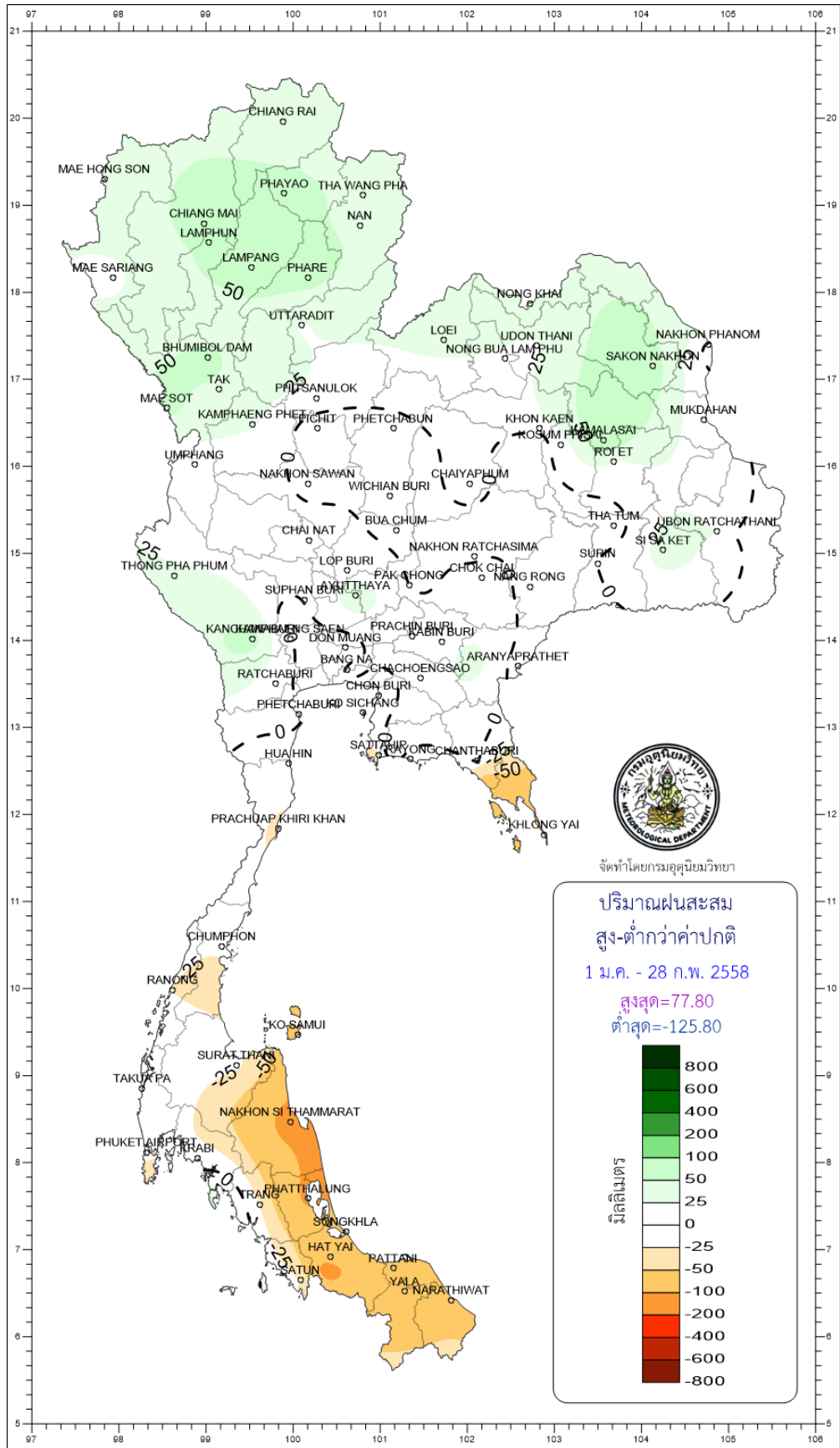
Station	Temperature (°c)		Rainfall (mm)		Accumulative rainfall (mm) Since 1 January	
	Mean	Above or below normal	Actual	Above or below normal	Actual	Above or below normal
Ranong	27.5	0.0	0.2	-15.8	0.6	-25.4
Takua Pa	27.3	0.3	47.2	6.1	79.3	-1.2
Phuket	28.7	0.0	6.8	-17.1	9.2	-45.0
Phuket Airport	28.0	0.3	32.9	5.7	51.4	-12.0
Ko Lanta	27.7	-0.5	87.8	69.8	98.8	65.9
Trang Airport	27.1	-0.4	0.9	-19.9	26.9	-26.4
Satun	28.1	0.0	6.2	-39.6	42.1	-24.9
Over the area	27.8	0.0	26.0	-1.5 -5%	44.0	-9.9 -18%

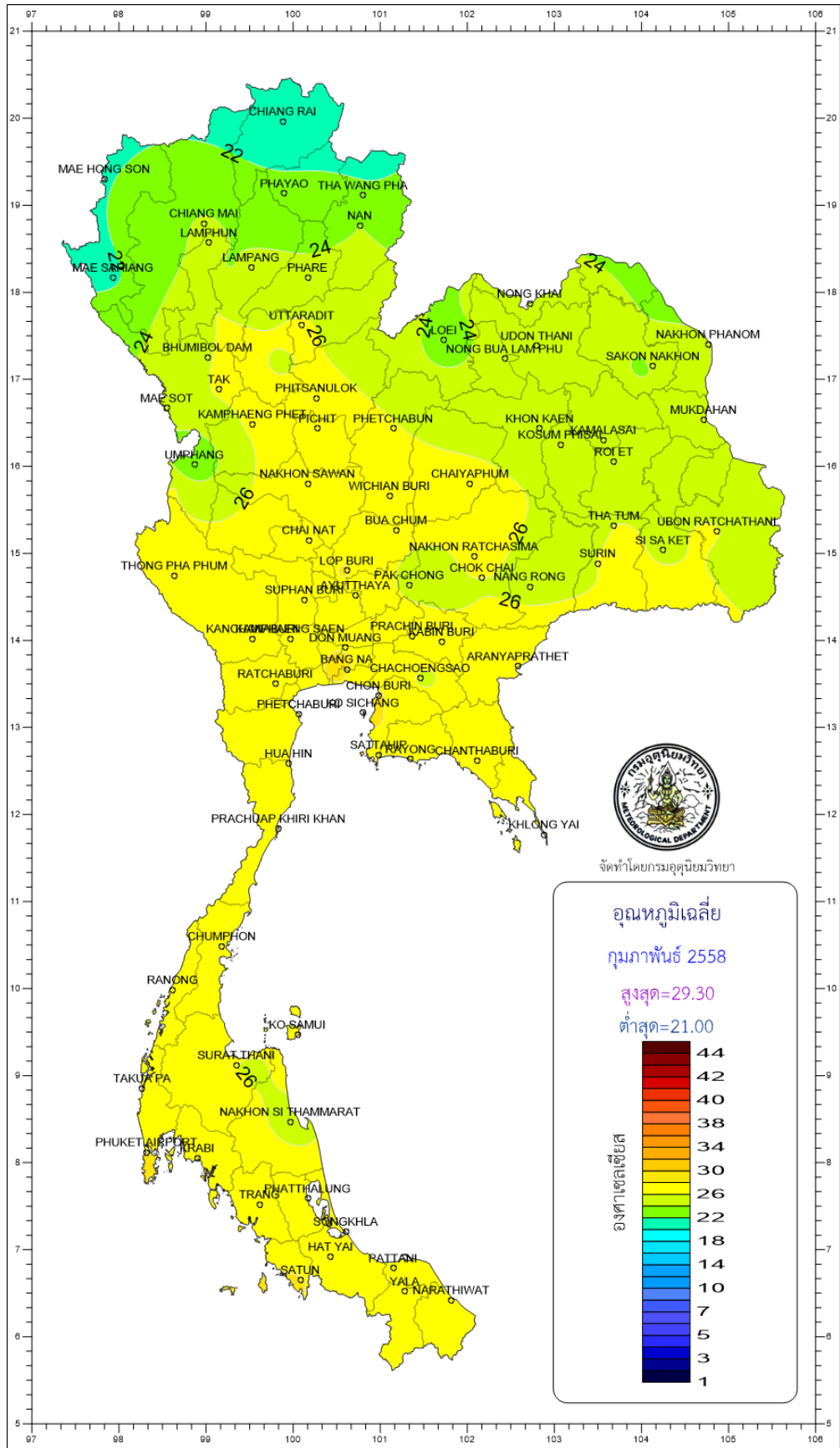
- NOTES :
- 1) Mean temperature is the average of daily dry-bulb temperature
 - 2) "T" is trace, rainfall amount less than 0.1 mm.
 - 3) "blank" is incomplete data.
 - 4) Temperature and rainfall are preliminary data.

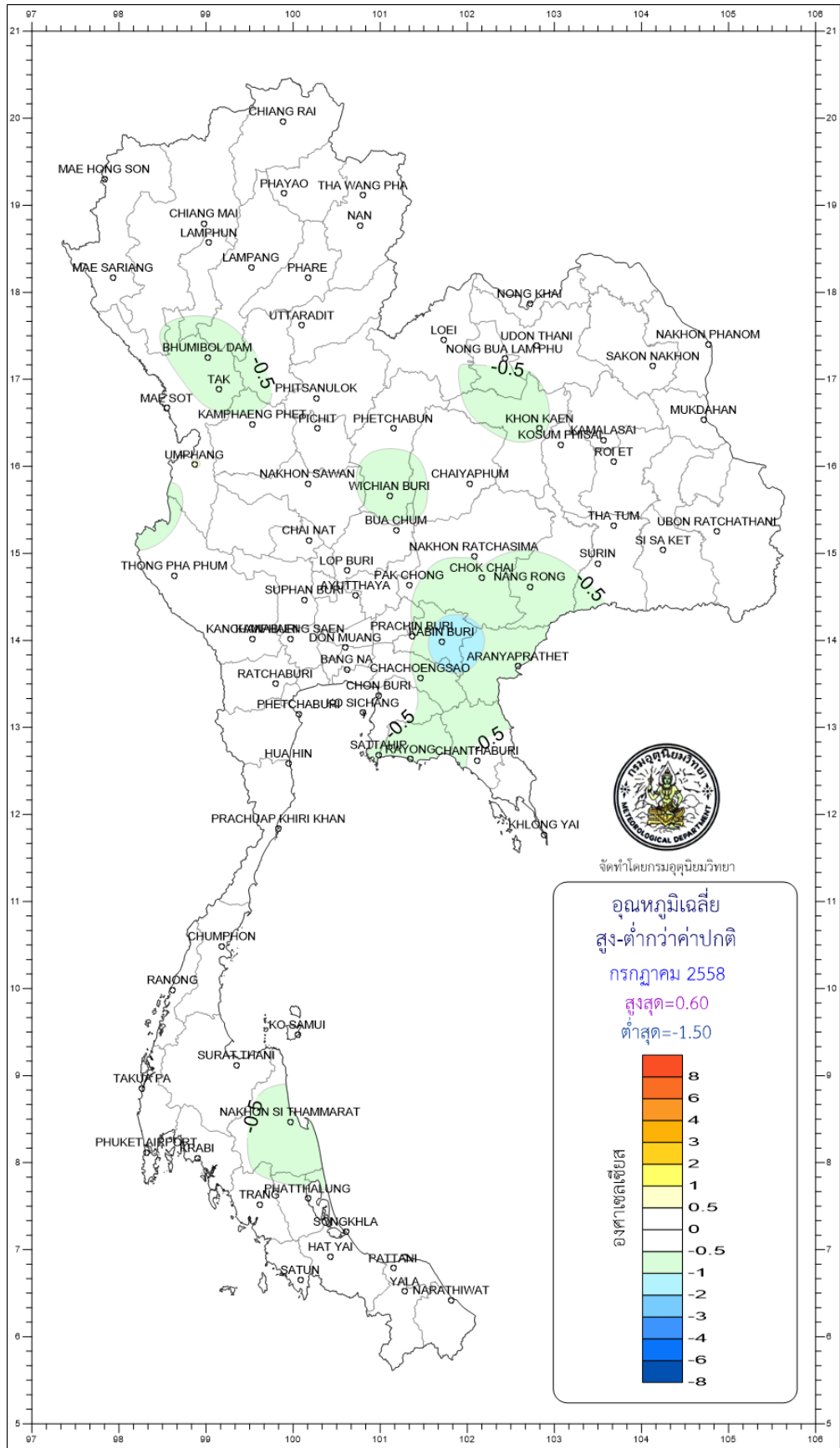










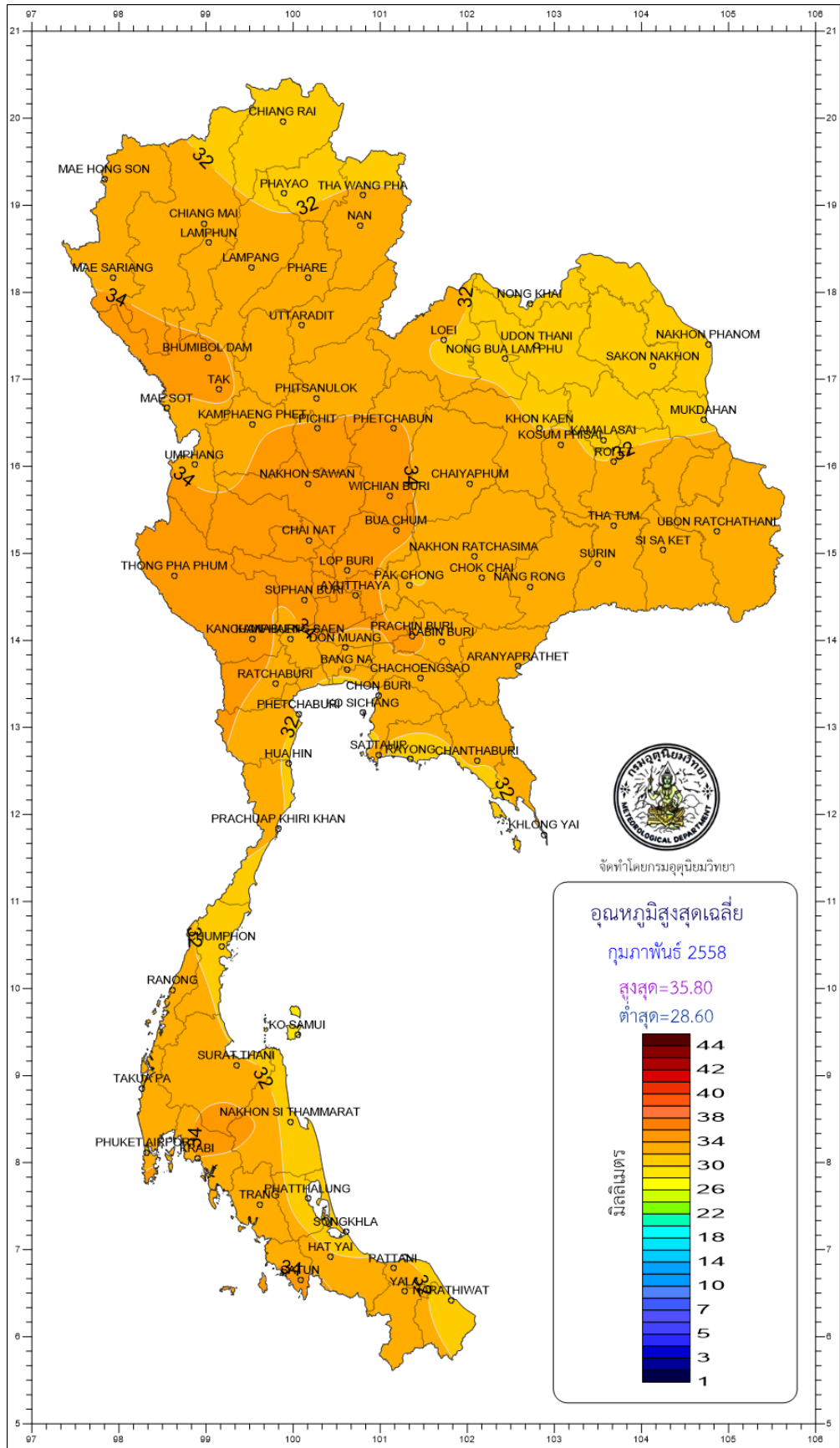


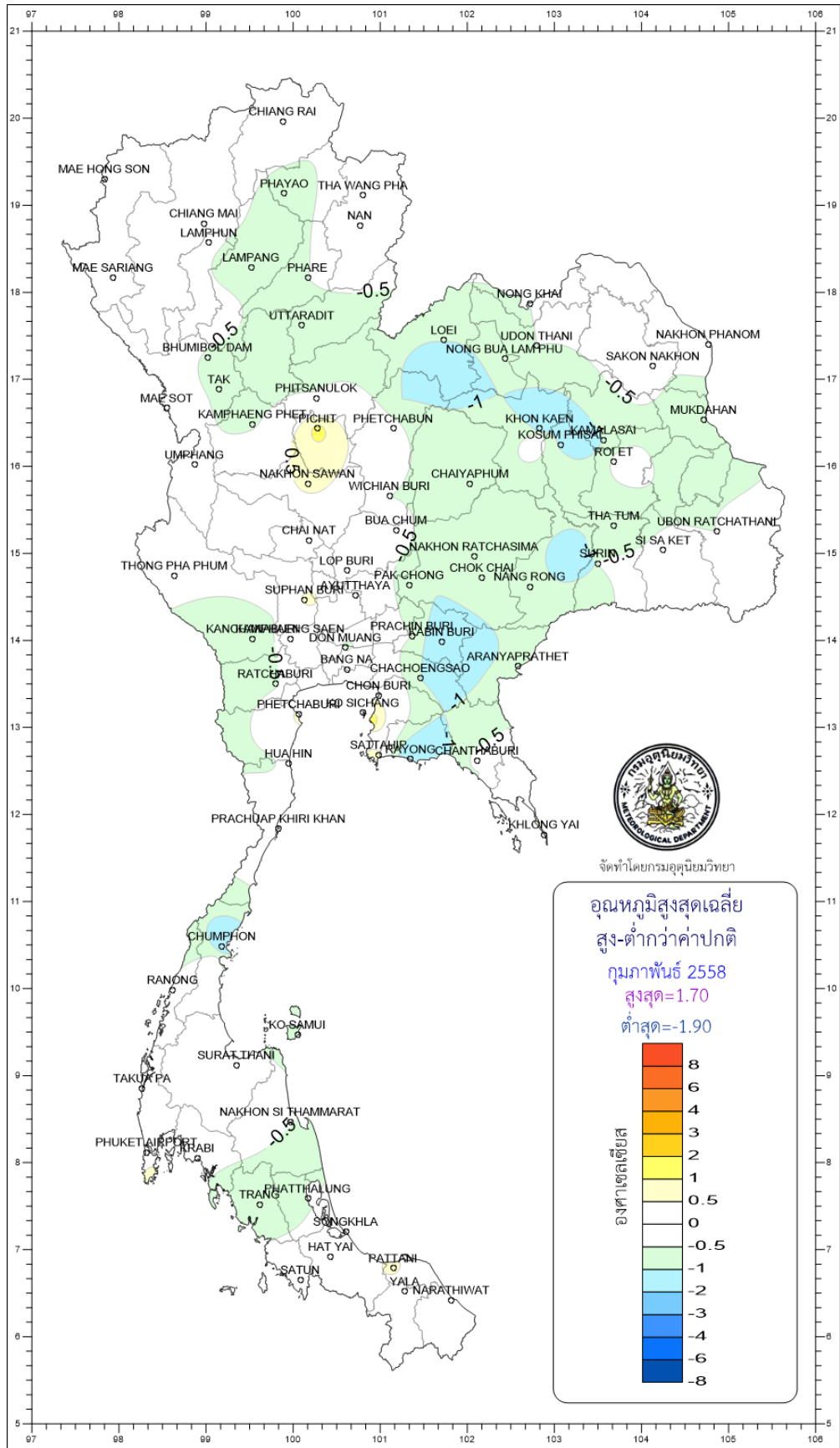
จัดทำโดยกรมอุตุนิยมวิทยา

อุณหภูมิเฉลี่ย
สูง-ต่ำกว่าค่าปกติ
กรกฎาคม 2558
สูงสุด=0.60
ต่ำสุด=-1.50

8
6
4
3
2
1
0.5
0
-0.5
-1
-2
-3
-4
-6
-8

องศาเซลเซียส





จัดทำโดยกรมอุตุนิยมวิทยา

อุณหภูมิสูงสุดเฉลี่ย
 สูง-ต่ำกว่าค่าปกติ
 กุมภาพันธ์ 2558
 สูงสุด=1.70
 ต่ำสุด=-1.90

8
6
4
3
2
1
0.5
0
-0.5
-1
-2
-3
-4
-6
-8

องศาเซลเซียส

